

UNIVERSITY OF WATERLOO MASTERS OF PLANNING ORIENTATION



SEPTEMBER • 2011

Welcome!

Welcome to the University of Waterloo, the Faculty of Environment, the School of Planning, and the graduate program in Planning!

The Association of Graduate Planners (AGP) represents graduate planning students to the University, works to foster social and academic networks among students and professional planners, and organizes student activities to enhance the learning experience of graduate planning students.

This orientation guide has been compiled by students who were in your position less than a year ago. Hopefully this guide gives you a brief overview of orientation week and life as a graduate student at UW.

More information can be found on our website, **www.uwagp.wordpress.com** or by introducing yourself to upper year students and asking questions - we are all very enthusiastic about your transition to graduate studies! Again, welcome to the program!

On behalf of the AGP,

Matt Quick

Tanya Christidis

Erica Warsh



Important Faculty and School Names

Andre Roy

Dean, Faculty of Environment
Professor, Geography and Environmental Management
EV1 349
agroy@uwaterloo.ca

Clarence Woudsma

Director, School of Planning
Associate Professor
EV3 3306
cwoudsma@uwaterloo.ca

Pierre Filion

Associate Director, Graduate Studies
Professor
EV3 3243
pfilion@uwaterloo.ca

Edie Cardwell

Graduate Studies Administrator
EV3 3211
cardwell@uwaterloo.ca



Association of Graduate Planners

Co-Presidents: Matt Quick
Tanya Christidis

Vice President: Erica Warsh

Secretary: Ria Brown

Social Chair: Rylan Graham

Treasurer: Mark Ouseley

WESEF Chair: Anthonia Ogundele

Webmaster: Joshua Warkentin



2011 ORIENTATION WEEK

School of Planning Graduate Student Orientation Schedule: Fall 2011

	Tuesday Sept. 6	Wednesday Sept. 7	Thursday Sept. 8	Friday Sept. 9
8AM		Teamwork Strategies EV1 354 and courtyard 8am-12pm		
9AM			ENV Faculty Meet and Greet EV2 Foyer 10-10:30am ENV Orientation PAS 2083 10:30am-12pm	UW TA workshop with Jean Andrey PAS 2083 10am-12pm
10AM				
11AM				
12PM		100 Mile Pizza Lunch EV2 Foyer 12-1pm	ENV Graduate Student Lunch EV2 Foyer 12-1pm	ENV Faculty Lunch and Outdoor games Firepit across from EV3 12-2pm
1PM	AGP's Welcome Lunch Grad House 1-3pm	Teamwork Strategies EV1 221, 354, and courtyard 1-2:30pm	Academic Integrity with Paul Parker PAS 2083 1:15-3pm	AGP Scavenger Hunt campus-wide 2-4pm
2PM				
3PM		Presentations EV1 221 2:30-4pm	Planning Meet and Greet EV1 221	
4PM				
5PM				
6PM	Teamwork Strategies (dinner provided) EV1 221 6-10pm			
7PM		AGP Social Ethel's Lounge 114 King St. N. 7pm	Tour of Uptown Waterloo Meet in South Campus Hall 7-8:30pm	AGP BBO 8 Dunbar Rd. N BYOB, food provided 7pm
8PM			EGSA and AGP Social Free food and live music! The Embassy 56 King St. N. 8:30pm	
9PM				
10PM				

*Attendance at the teamwork strategies sessions is mandatory for MA and MES students
 *The Academic Integrity and TA workshop sessions are mandatory for all new graduate students

Campus

EV Buildings

The Faculty of Environment is located in EV1 and EV2 on the west side of UW campus. As of September 2011, the School of Planning is located in EV3, a newly completed LEED-Platinum building that features a two-storey bio wall, green roof, and café.



Study Space

There are currently two study rooms located in EV1 355 and 357 that are designated for Environment graduate students. Lockers, a printer, and a phone are located in each room. Nearby, a student lounge contains couches, a microwave and fridge. Mailboxes are located in EV1 355. The code to both Environment grad study rooms is 821552.

EV Computer Labs

There are a number of computer labs located in EV1, EV2 and EV3. The MAD computer lab in EV2 holds many computers and printing stations and a Mac lab is right around the corner.

Grad House

The Grad House is a gathering place exclusive to graduate students at the University of Waterloo. It offers a variety of food and beverages, live music, and a relaxed space for students to interact.



Getting Started

WatCard

Each student at UW is issued an identification card called the WatCard. It can be obtained by going to the lower level of the Student Life Centre (SLC). WatCards can be used on and off-campus at the library, gym facilities, and other services. Money can be added to the WatCard through debit, credit, or cash, for purchasing on and off-campus, including printers, food, and retail.

MAD Lab

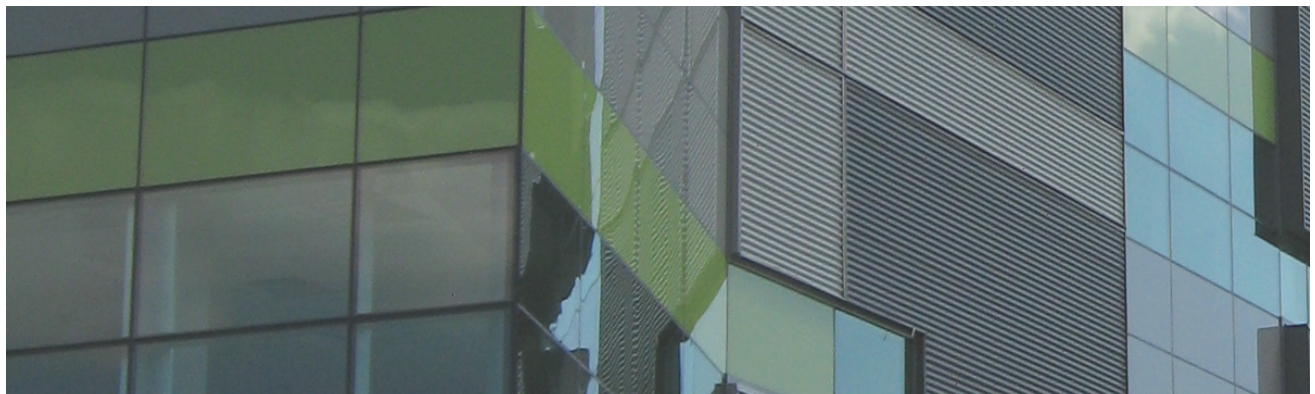
The MAD lab (Mapping, Analysis, and Design) should be your first stop for computer and technical help at the Faculty of Environment. It is located in ENV2-1008 or you can contact MAD at helpdesk@envmail.uwaterloo.ca. UW supports wireless internet and wireless printing. MAD maintains a number of facilities including Mac and Windows computer labs, a photography studio, a tech shop, and an audio-visual studio and lab.

Business Cards

UW offers a great deal on business cards: \$5.00 for 50 cards! Business cards can be purchased from the main reception desk on the 3rd floor of the Tatham Centre.

Parking Pass

Parking passes can be obtained from Parking Services at the General Services building located on the north side of campus.



Libraries and Transit

Libraries

UW has two primary libraries on campus - Davis Centre (DC) and Dana Porter (DP). DP specializes in the arts, humanities, and social sciences, whereas DC is home to most resources on engineering, math, and sciences. Other libraries include the Map Library (currently



located in EV1), the Musagetes Architecture Library (in Cambridge), and the University College libraries (Renison, Conrad Grebel, etc.). You can log-in to the library website using your last name and library number on the bottom of your WatCard. Keep your eyes peeled for UW Library workshops to help familiarize yourself with the library system.

Transit

Travelling in Waterloo and Kitchener can be done through the transit system, Grand River Transit (GRT). The express route, the iXpress, runs north-south along King St. and stops at UW. With your WatCard, travel using GRT is free!

Travelling Outside Waterloo Region

Via Rail Station: Corner of Weber St. and Victoria St., Kitchener

Greyhound Station: Kitchener Bus Terminal (aka Charles St. Station)

Shuttlebuses: Airways Transit to the Toronto Pearson International Airport, leaves from the Student Life Centre

